

[Subscribe](#)

[Past Issues](#)

[Translate](#) ▾

[RSS](#) 📡

[View this email in your browser](#)



Expanded Learning

BRIGHT SPOTS

Dear Expanded Learning Partners,

We are excited to launch our newsletter **Expanded Learning Bright Spots**, where we plan to share regular updates and resources, including research reports, funding opportunities, job openings, and more! We will also include a section in this publication that will highlight the programs being offered by our expanded learning partners. We hope you find the information shared in this newsletter useful and valuable in supporting your work.

As the new school year starts and students head back to their classrooms, we want you to know that we are endlessly inspired by your dedication to serving our youth in Los Angeles, and we appreciate the pivotal role you play in preparing them for success in school and life. We look forward to working alongside you to support and uplift the important work you all do each day to provide young people with enriching activities and experiences that help them thrive and prosper.

In partnership,
The ExpandLA Team

ExpandLA Reports & Resources



Landscape of Expanded Learning in LA County: Survey Report

Report Authors:
Claremont Evaluation Center
Claremont Graduate University
Tiffany Berry, PhD
Michelle Sloper, PhD
Prina Patel, MA
Micol Gomez, MA



July 2023

Expanded Learning Landscape Report

ExpandLA partnered with the Claremont Evaluation Center (CEC) at Claremont Graduate University to develop and conduct a landscape survey to

The feedback from our provider listening sessions was foundational to the development of the landscape survey. Elements of the survey

better understand the needs and experiences of expanded learning providers operating throughout LA County. The purpose of the survey was to capture key data points that would be used to inform ExpandLA's future organizational priorities, strategic initiatives, and advocacy efforts.

were informed by ExpandLA and the CEC's understanding of the issues and challenges facing expanded learning organizations that were gleaned from the listening sessions. To access the report, click the link below.

[Link to Report](#)

Expanded Learning Funding Report

ExpandLA partnered with the Glen Price Group to develop an Expanded Learning Funding Report that examines federal, state, and local funding sources that could be used to support expanded learning. ExpandLA developed this report as a tool for supporting the expanded learning field's fund development efforts and for providing clarity about the existing funding landscape. In addition, this report identifies barriers to accessing funds and challenges related to the lack of alignment between the different funding sources. To access the report, click the link below.

Expanded Learning Funding Report



Written by



Glen Price Group

Published June 2023

[Link to Report](#)

Listening to Learn

Overview of Expanded Learning Sector Needs in Los Angeles

2023

Lifting Up Youth Voices

Overview of Youth Needs in Los Angeles

2023

Provider & Youth Listening Sessions Reports

Earlier this year, ExpandLA held virtual listening sessions where we engaged directly with expanded learning providers from across Los Angeles County to learn more about the issues, challenges, and opportunities impacting the sector. Additionally, we partnered with the Invest in Youth Coalition to host virtual

programs that they are involved with and how they think that these programs can better support them and meet their needs. We are excited to share our summary reports, which provide an overview of the major themes that emerged from these discussions. We are grateful to our expanded

youth listening sessions, during which we gathered feedback directly from youth living in different areas of LA County about the expanded learning

learning partners and all the youth who participated in these candid and informative conversations.

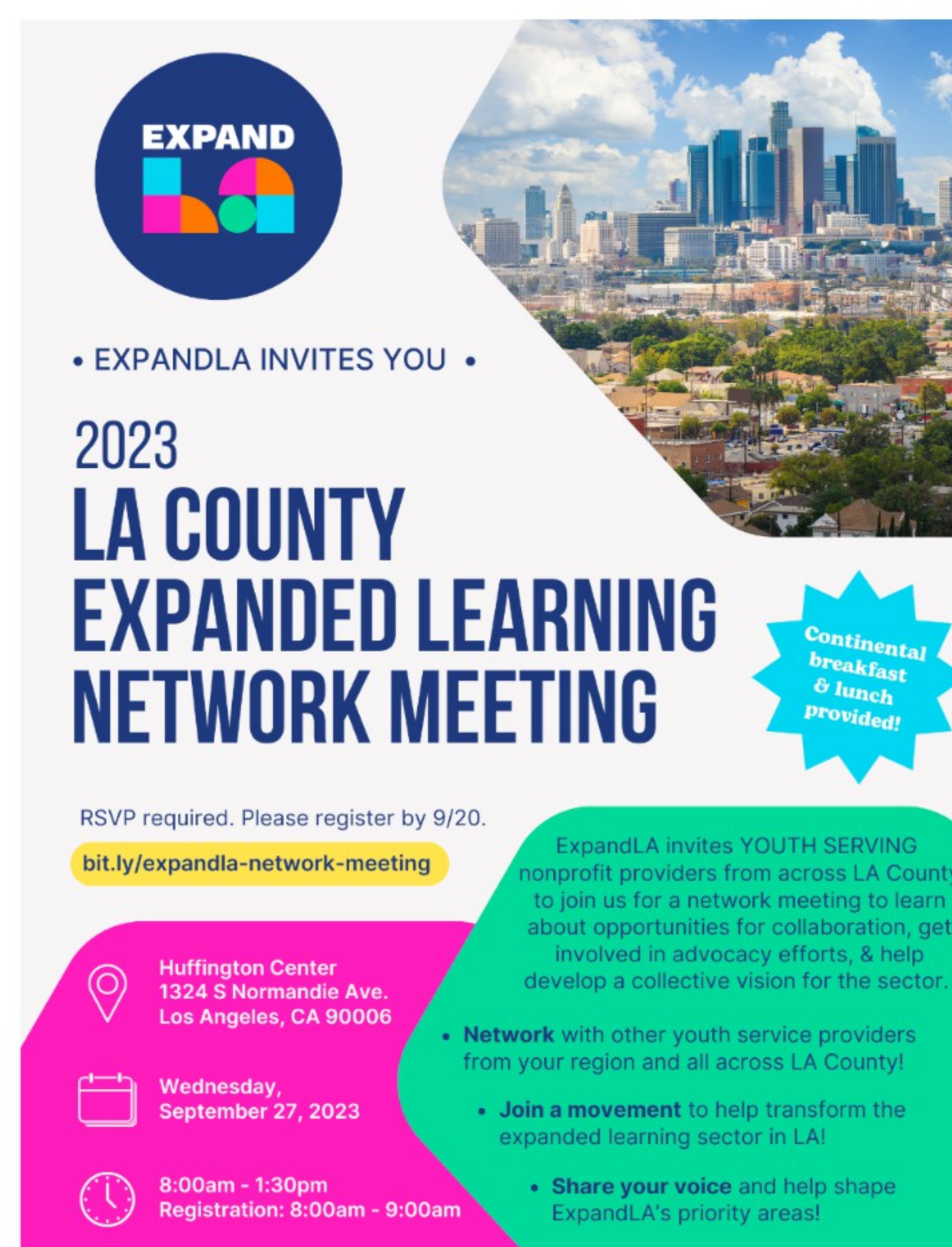
[Link to Reports](#)

ExpandLA Countywide Network Meeting

ExpandLA is convening youth serving organizations from all across Los Angeles at our countywide network meeting on Wednesday, September 27. The half-day meeting will include opportunity to network with other providers, focus on regional planning efforts, and hear about current and future advocacy efforts to increase funding for out-of-school time programs. This is an opportunity to begin building collective power for the youth services sector in Los Angeles and we hope that you will join us to share your voice.

Continental breakfast, lunch, and parking will be provided. Please see the flyer below for more details and be sure to register by September 20, 2023. Spaces are filling up quickly.

[Register Here](#)



PARTNER HIGHLIGHTS

The summer months provide an important and unique opportunity for expanded learning organizations to offer a variety of enriching activities and experiences for youth designed to foster their academic, social and behavioral growth while they are out of school. Over the past couple of months, our expanded learning partners were hard at work serving youth across Los Angeles County. As students began to prepare to return to school, some of our agency partners took advantage of the final days of the summer break to focus on enhancing the quality of their programs by building their staff's capacity through fun and engaging professional development training.

Here is a glimpse of what some of our expanded learning partners were up to

this summer.

Harlem Lacrosse - LA

Harlem Lacrosse - Los Angeles (HL-LA) is primarily a school-based, wrap-around program. HL-LA collaborates with the Compton Unified School District and runs school-based programs at Walton Middle School and Davis Middle School which feed into Compton High School's program.

HL-LA offers programming four different seasons a year: fall, winter, spring and summer. All sessions except summer are 10 weeks long where the organization offers practice 2-4x a week and one game a week during the fall and spring. In the summer, HL-LA provides two camps. One of them is an overnight camp that is 4 days and 3 nights at the Thacher School in Ojai, California, and the other is a day camp. This summer, the 4-week local summer day camp was hosted at Enterprise Park which included intentional unique experiences that focused on improved lacrosse development, academic enrichment, and social emotional learning, with an emphasis on building healthy relationships with peers, family, and community members.

HL-LA's overnight camp kicked off this June when staff and volunteers took 75 rising 7th-12th from Compton Unified School District to Ojai for a 4-day immersive overnight lacrosse camp hosted at The Thacher School. These student-athletes earned the opportunity to participate in this experience by showing due diligence and commitment to their personal, academic, and lacrosse goals. Participants enjoyed the beautiful scenic grounds of Thacher via hiking, swimming, and playing lacrosse. Highlights include sunset and glow lax, a Juneteenth celebration where those that came before us were honored, and the infamous student-staff game. Age appropriate SEL activities were centered on leadership and personal development creating an experience that bonded players from our six different programs—really helping to build the Harlem Lacrosse - Los Angeles family.

Finally, HL-LA middle school boys visited San Diego to enjoy the Men's World Lacrosse Championships. Participants of course got a chance to witness some of the world's best lacrosse players compete against each other, but the students also enjoyed time at the beach, touring some of San Diego's college campuses, and spending quality time with their teammates and coaches to further strengthen team culture. HL-LA hopes that their student-athletes walked away with an even deeper love of the game and their team, while also imagining what their future could look like in lacrosse and/or college!

For more information on Harlem Lacrosse LA's programs, please visit: harlemlacrosse.org/los-angeles



Midpoint Connect

Midpoint Connect is an organization founded during the pandemic by four leaders who sought to bridge the gap between various cultures and to promote diversity and inclusion. The





organization is dedicated to providing safe, open and welcoming spaces for youth of different backgrounds to come together to share their cultures and engage in respectful dialogue that promotes understanding and peace.

For more information on Midpoint Connect, please visit: midpointconnect.org

InsideOUT Writers

InsideOUT Writers is a nonprofit organization created in 1996 to serve and support young people in juvenile detention and those navigating life after incarceration. The organization is committed to reducing recidivism through programming that incorporates arts-based healing, community reintegration services and diversion services for at-risk youth. Their program uses creative writing as a tool for youth to express themselves and to transform their lives. Youth participants gain important life skills and the confidence they need to successfully reintegrate into their communities. InsideOUT Writers not only offers weekly creative writing classes with dedicated teachers, it also provides opportunities for youth to share their work and talent with larger audiences through Open Mic Nights.

The following creative piece was written and performed by one of their youth participants.

"I always want to walk away: LEAVE- RUN- ESCAPE to some place safe, but you twist my arm and my words and make me stay, no matter how disgusting I feel when I see your face. YOU HAVE MADE ELM STREET OF MEMORY LANE!! NO, I couldn't have made you wait, NO you couldn't have given me space..but I could have believed in you and you didn't have to be fake, not here- not with me. Of all the ways to make me bleed you chose to cut this deep; through to the pits and pitfalls that I hide behind & retreat to... But now I know the truth I do not need you. You are not a need. Honestly, I just wish

InsideOUT Writers

InsideOUT Writers is a nonprofit organization created in 1996 to serve and support young people in juvenile detention and those navigating life after incarceration. The organization is committed to reducing recidivism through programming that incorporates arts-based healing, community reintegration services and diversion services for at-risk youth. Their program uses creative writing as a tool for youth to express themselves and to transform their lives. Youth participants gain important life skills and the confidence they need to successfully reintegrate into their communities. InsideOUT Writers not only offers weekly creative writing classes with dedicated teachers, it also provides opportunities for youth to share their work and talent with larger audiences through Open Mic Nights.

The following creative piece was written and performed by one of their youth participants.

"I always want to walk away: LEAVE- RUN- ESCAPE to some place safe, but you twist my arm and my words and make me stay, no matter how disgusting I feel when I see your face. YOU HAVE MADE ELM STREET OF MEMORY LANE!! NO, I couldn't have made you wait, NO you couldn't have given me space..but I could have believed in you and you didn't have to be fake, not here- not with me. Of all the ways to make me bleed you chose to cut this deep; through to the pits and pitfalls that I hide behind & retreat to... But now I know the truth I do not need you. You are not a need. Honestly, I just wish



Before the start of each new school year, Woodcraft Rangers welcomes back all-staff to Back-2-Woodcraft, or B2W. At B2W, hundreds of Woodcraft staff

participate in multiple workshops throughout the day covering a range of important topics in the field of expanded learning, including creating an engaging learning environment, behavior management and restorative practices, building strong relationships with community members, trauma-informed care, early learning, and more!

All workshops are aimed at providing staff with the tools and resources necessary to rejuvenate their passion for youth development and inspire them to ensure a quality and holistic program for every Woodcraft student - that's the Woodcraft Way!

This year, B2W was hosted over the course of 3 days for over 1,000 Woodcraft Rangers staff. B2W was generously supported by Fulcrum!, Mastery Coding, Lakeshore and the DoubleTree by Hilton in Rosemead.

To learn more about Woodcraft Rangers, please visit: woodcrafrangers.org

Funding Opportunities

Outdoor Equity Grants Program

There will be in person and virtual workshops available. This funding is made available through general funds approved by the California Legislature and signed by Governor Gavin Newsom in 2020/21 and 2021/22.

California State Parks is now accepting applications for its Outdoor Equity Grants Program (OEP), which offers \$50 million in grant funding for nature-based outdoor programs for underserved communities. The program also empowers youth and families with outdoor leadership education, career pathways, environmental justice engagement, and access to nature.

Application deadline: December 14, 2023
For all dates and eligibility, please visit the link below.

[Link to Application Information](#)

Learning Opportunities

2023 Fall ELO-P Academy

The California AfterSchool Network, in partnership with the CA Dept. of Education's Expanded Learning Division, is excited to kick off the new school year with the 2023 Fall Expanded Learning Opportunities Program Academy!

The virtual 4-day 2023 Fall ELO-P Academy is designed to support CA educators with the planning, implementation, strengthening and highlighting of promising practices from our LEA/CBO practitioners.

To register, please visit the link below.

[Register Here](#)

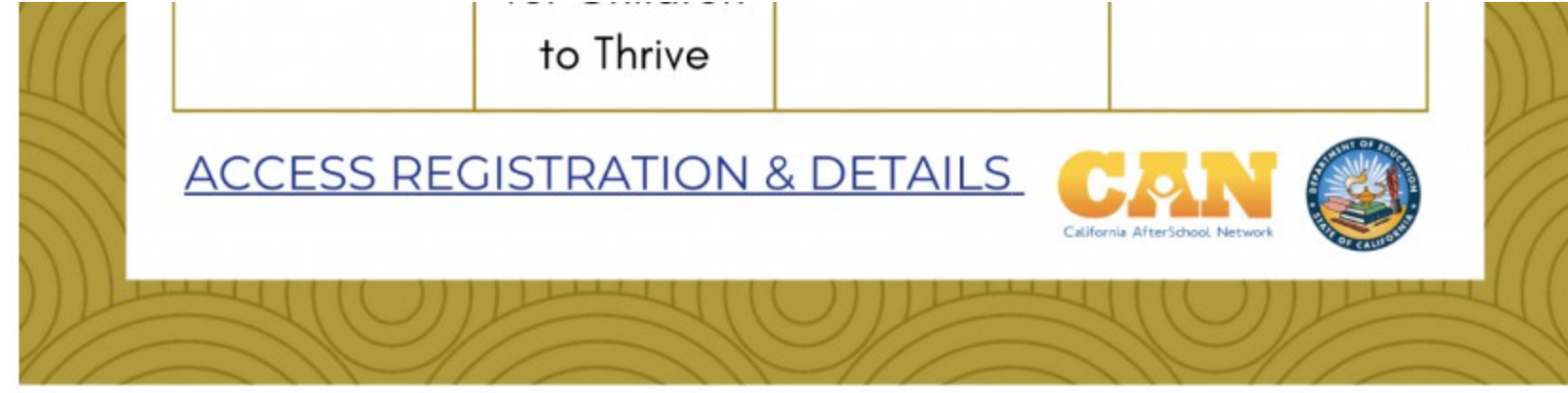
Register for the...

2023 Fall ELO-P Academy

A 4-day virtual academy offering workshops to support & strengthen CA Expanded Learning Opportunities Programs

Daily, 10:00 AM - 12:00 PM

Session One	Session Two	Session Three	Session Four
Wednesday, Sep. 20	Thursday, Sep. 21	Tuesday, Sep. 26	Wednesday, Sep. 27
ELO-P Nuts & Bolts	Creating Conditions for Children	Supporting Early Learners	Supporting LEA Leaders



Copyright (C) 2023 ExpandLA. All rights reserved.

Our mailing address is:

Want to change how you receive these emails?
You can [update your preferences](#) or [unsubscribe](#)

